

CASELLA

24x series

Casella 24x Digital Sound Level Meter

Designed to make noise measurements with confidence. The 24x Series is an easy to use range of instruments, designed to undertake noise measurements for a variety of applications.



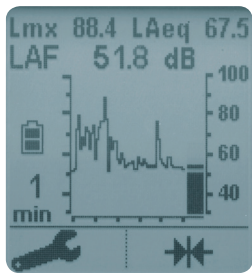
www.casellasolutions.com

Applications

- Occupational noise
- Product noise
- Fire alarm testing
- Simple walk through noise surveys

Key Features

- Simple operation
- Rugged design
- High resolution display
- Latest digital technology
- Fully compliant with IEC 61672
- Large measurement range
- Logging and Averaging models
- Greater than 35 hours battery life
- 2 year warranty
- USB output to PC with optional software
- Includes calibration certificate



By implementing the latest digital technology, the 24x Series gives excellent repeatability, ensuring the highest levels of accuracy and performance, all housed in a rugged and compact design.

With a high resolution display unparalleled in such an inexpensive unit, the 24x Series can display the time-history of noise levels, allowing an easy assessment of the current noise environment.

Features

The 24x Series has a simple user interface using two 'softkeys', which represent options displayed at the bottom of the screen. This makes the instrument very easy to use and any setup changes are retained the next time the unit is switched on. To accurately measure fluctuating noise levels, the CEL-246 model measure average values, integrated over time; L_{eq} for European Standards and L_{avg} for the USA. In order to quantify how noise varies with time, the CEL-246 logging variant (CEL-246 stores 419,000 data points) is also available to store the time history of the noise levels as well as the levels for the overall measurement (e.g. maximum and average levels, as detailed in the table opposite).

Casella UK, Bedford, United Kingdom
Tel: +44 (0) 1234 844100
Email: info@casellasolutions.com

Casella China, IDEAL Industries China, Shanghai, China
Tel: +86-21-31263188
Email: info@casellasolutions.cn

Casella Australia, IDEAL Industries (Aust) Pty Ltd, Melbourne, Australia
Tel: +61 (0)395622684
Email: australia@casellasolutions.com

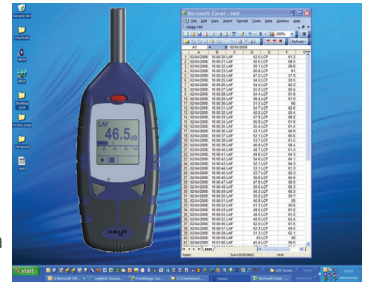
Casella USA, Buffalo, USA
Tel: +1 (716) 276-3040
Email: info-us@casellasolutions.com

Casella India, IDEAL Industries India Pvt.Ltd, Haryana, India
Tel: +91 124 4495104
Email: casella.sales@ideal-industries.in

Casella reserves the right to amend the specification without notice

dB24 Software

This optional software allows the CEL-246 real-time USB output to be logged and stored on a PC. Sound pressure levels are stored by dB24 every second into a data file compatible with PC based



spreadsheet applications. Data stored within the CEL-246 can also be accessed since these meters act like a memory stick, allowing transfer of data to spreadsheet applications.

Technical Specification

Selectable ranges:	30-100 or 60-130dB
Noise floor:	<33dB(A)
Time weightings:	Fast, Slow and Impulse
Frequency weightings:	A and C
Weight:	245g including batteries
Dimensions:	72x212x31mm
Batteries:	3x AA Alkaline or rechargeable
Battery life:	Greater than 35 hours
External power:	5V via USB 2.0 'Mini B' socket
Tripod mount:	1/4" Whitworth socket
AC output:	0.85V RMS @ FSD 'A' weighted (Optional 0-1.3V DC instead of AC can be specified at the time of ordering)
Operating conditions:	Relative humidity, 5 to 90% (non condensing). Temperature, 0 to 40°C. Atmospheric pressure, 65 to 108kPa.

Model Selection

24x series	CEL-240	CEL-246
Instantaneous and maximum levels	●	●
Logging of 1s levels*		●
Selectable Logging interval of 1-10s*		●
Averaging (L_{eq} or L_{avg})		●
Compliance with ANSI S1.4, IEC 61672, 60651	●	●
Compliance with ANSI S1.43, IEC 60804		●

*requires dB24 to access data stored on CEL-246 model

Accessories

CEL-6840	Kit case
CEL-6841	Spare windshield
CEL-6842	dB24 Software (optional)
CMC51	PC to USB cable (optional)
CEL-120/2	Acoustic Calibrator (Class 2)

BUHL BONSØE
MÅLBAR VIDEN

Hassellunden 11A,
2765 Smørum Tel. 45
95 04 10
info@buhl-bonsoe.dk
www.buhl-bonsoe.dk

SM09002 v3.0